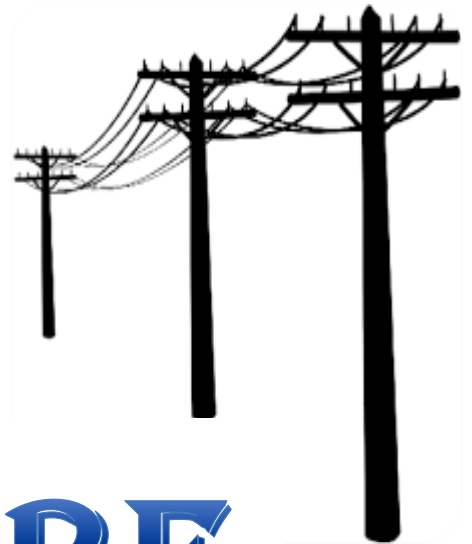




VICAR CONCRETE PRODUCTS



BROCHURE



VICAR CONCRETE PRODUCTS



SPC POLE

Registered Office Address Tropical Alauddin Tower, 9th Floor, Unit: 7/A, Plot: 32/C, Road: 02, Sector : 03, Uttara, Dhaka-1230, Bangladesh
Phone : +88 02 58954566,

Factory Address Mouza Laxmindar Plot-2756,2757,2758, Ghatail, Tangail
Standard of Manufacturing As per BREB Pub: 450-2003, Revision 1 of BREB 450-1994 Date: June 2003 and Relevant standards as specified in the BREB & BPDB SPC Pole Specification

Design & Design Calculation Designs' Adequacy certificates with Drawings, designs and calculations from BRTC, BUET, SUST

Production Capacity per year Approximate 1,46,000 nos.

Brief Introduction:

We aim at the perfection of product design at all times. We always guarantee the quality of product. We have advanced automatic production equipment and exact production line. The technical experts take part in production directly, which ensures the stability and reliability of products

Products:

BREB Item No	Length & Class	Approximate Weight (kg)
R-40	7.6m Class N7	332.4
R-41	9m Class N6	542.9
R-42	9m Class N5	610.6
R-43	10.6m Class N6	674.5
R-44	10.6m Class N5	740.9
R-45	12m Class N5	950.0
R-46	12m Class N4	1122.7
R-47	13.7m Class N4	1326.6
R-48	15.2m Class N4	1425.1
R-49	18.3m Class N2	Upper part 1094.6 Lower part 1775.0
9.0 M 200 daN SPC Pole		
9.0 M 250 daN SPC Pole		
9.0 M 300 daN SPC Pole		
12.0 M 450 daN SPC Pole		
12.0 M 502 daN SPC Pole		
15.0 M 550 daN SPC Pole		
15.0 M 650 daN SPC Pole		